

# M25 junction 10/A3 Wisley interchange TR010030

## 9.89 A plan clearly showing the extent of the registered areas for Wisley Common and Ockham Common prior to the construction of the M25 (Response to ExQ3 2.9.1)

Rule 8(1)(b)  
Infrastructure Planning (Examination Procedure) Rules 2010



# Infrastructure Planning

## Planning Act 2008

### The Infrastructure Planning (Examination Procedure) Rules 2010

### M25 junction 10/A3 Wisley interchange

### Development Consent Order 202[x ]

---

**9.89 A plan clearly showing the extent of the registered areas for  
Wisley Common and Ockham Common prior to the construction  
of the M25 (Response to ExQ3 2.9.1)**

---

<b>Rule Number:</b>	Rule 8(1)(b)
<b>Planning Inspectorate Scheme Reference</b>	TR010030
<b>Application Document Reference</b>	TR010030/9.89
<b>Author:</b>	M25 junction 10/A3 Wisley interchange project team, Highways England and Atkins

<b>Version</b>	<b>Date</b>	<b>Status of Version</b>
Rev 0	20 April 2020	Deadline 7

# Table of contents

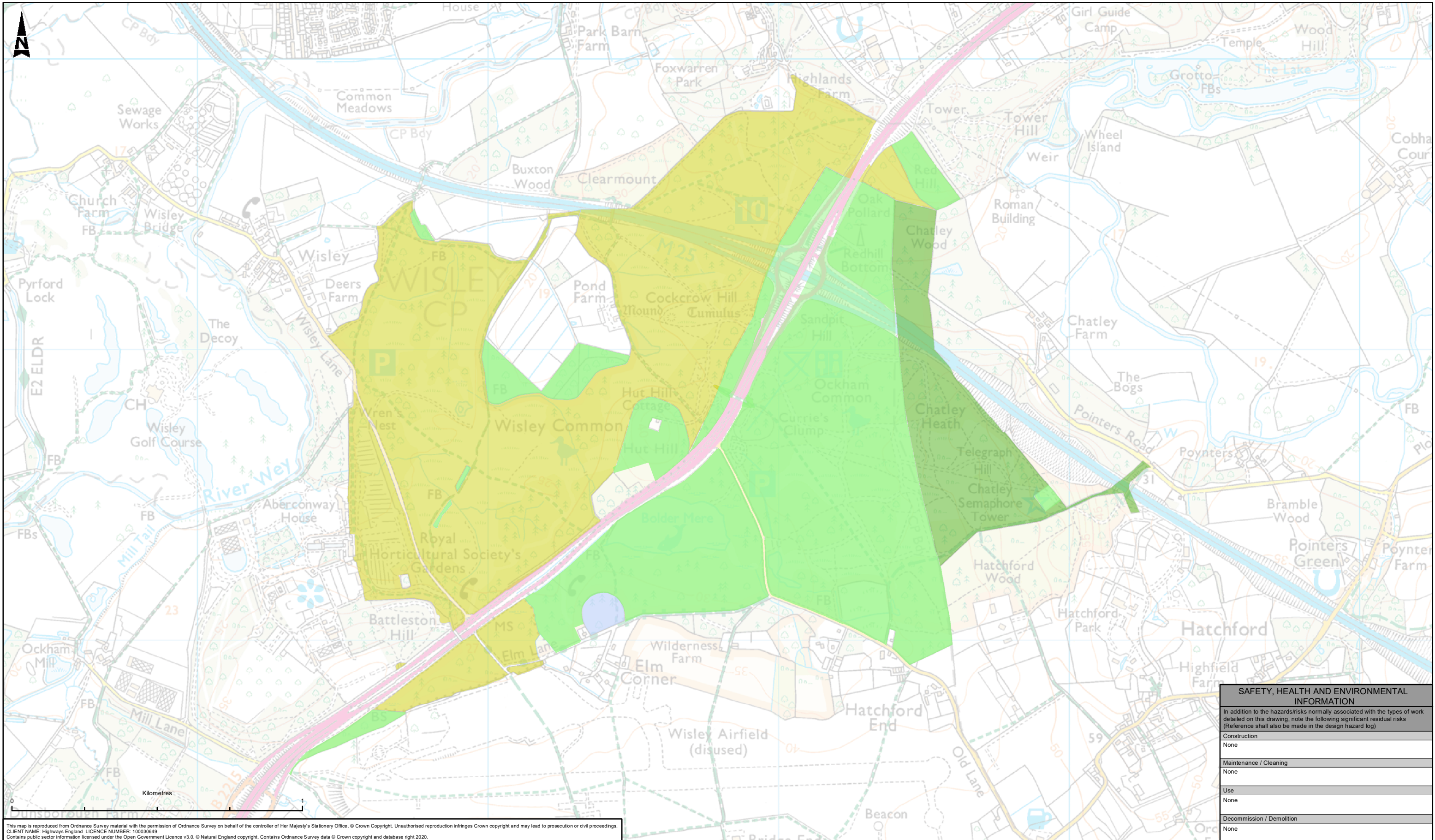
Chapter	Pages
<b>1. Introduction</b>	<b>4</b>
1.1 Purpose of this document	4
<b>2. A plan clearly showing the extent of the registered areas for Wisley Common and Ockham Common Prior to the Construction of the M25 (Response to ExQ3 3.91</b>	<b>5</b>

# 1. Introduction

## 1.1 Purpose of this document

- 1.1.1 This document provides a plan to support the response to ExAQ3 2.9.1. The response can be found in TR010030/9.82, which was submitted at Deadline 7.

**2. A plan clearly showing the extent of the registered areas for Wisley Common and Ockham Common Prior to the Construction of the M25 (Response to ExQ3 3.91)**



This map is reproduced from Ordnance Survey material with the permission of Ordnance Survey on behalf of the controller of Her Majesty's Stationery Office. © Crown Copyright. Unauthorised reproduction infringes Crown copyright and may lead to prosecution or civil proceedings.  
 CLIENT NAME: Highways England LICENCE NUMBER: 10003849  
 Contains public sector information licensed under the Open Government Licence v3.0. © Natural England copyright. Contains Ordnance Survey data © Crown copyright and database right 2020.

LEGEND							
	Ockham Common						
	Wisley Common						
	Chatley Heath						
	Village Green						

SAFETY, HEALTH AND ENVIRONMENTAL INFORMATION	
In addition to the hazards/risks normally associated with the types of work detailed on this drawing, note the following significant residual risks (Reference shall also be made in the design hazard log)	
Construction	None
Maintenance / Cleaning	None
Use	None
Decommission / Demolition	None

Description		Drawing Suitability		Status		Project Title	
Status	Revision	Drawn	Checked	Reviewed	Authorised	Issue Date	FOR INFORMATION
Description		Description		Description		Description	
Status	Revision	Drawn	Checked	Reviewed	Authorised	Issue Date	<b>ATKINS</b>
Description		Description		Description		Description	
Status	Revision	Drawn	Checked	Reviewed	Authorised	Issue Date	Member of the SNC-Lavalin Group
Description		Description		Description		Description	
Status	Revision	Drawn	Checked	Reviewed	Authorised	Issue Date	Epsom Gateway Ashley Avenue Epsom Surrey KT18 5AL
Description		Description		Description		Description	
Status	Revision	Drawn	Checked	Reviewed	Authorised	Issue Date	Tel: +44 (0) 1372 726140 Fax: +44 (0) 1372 740055
Description		Description		Description		Description	
Status	Revision	Drawn	Checked	Reviewed	Authorised	Issue Date	Copyright © Atkins Limited (2020) www.atkinsglobal.com
Description		Description		Description		Description	
Status	Revision	Drawn	Checked	Reviewed	Authorised	Issue Date	Client
Description		Description		Description		Description	
Status	Revision	Drawn	Checked	Reviewed	Authorised	Issue Date	<b>highways england</b>
Description		Description		Description		Description	
Status	Revision	Drawn	Checked	Reviewed	Authorised	Issue Date	Project Title ROAD IMPROVEMENT PROGRAMME M25 Junction 10
Description		Description		Description		Description	
Status	Revision	Drawn	Checked	Reviewed	Authorised	Issue Date	Drawing Title WISLEY COMMON, CHATLEY HEATH AND OCKHAM COMMON PRIOR TO THE CONSTRUCTION OF THE M25 (RESPONSE TO EXAQ3 2.9.1)
Description		Description		Description		Description	
Status	Revision	Drawn	Checked	Reviewed	Authorised	Issue Date	Drawing Number
Description		Description		Description		Description	
Status	Revision	Drawn	Checked	Reviewed	Authorised	Issue Date	Project HE551522 - ATK - EGN XX - GS - GI - 000027
Description		Description		Description		Description	
Status	Revision	Drawn	Checked	Reviewed	Authorised	Issue Date	Original Size: A3 Scale: 1:12,000 Project Ref. No: --- Sheet: 1 of 1 Rev: P01

© Crown copyright (2020).

You may re-use this information (not including logos) free of charge in any format or medium, under the terms of the Open Government Licence. To view this licence:

visit [www.nationalarchives.gov.uk/doc/open-government-licence/](http://www.nationalarchives.gov.uk/doc/open-government-licence/)  
write to the Information Policy Team, **The National Archives, Kew, London TW9 4DU**,  
or email [psi@nationalarchives.gsi.gov.uk](mailto:psi@nationalarchives.gsi.gov.uk).

Printed on paper from well-managed forests and other controlled sources.

Registered office Bridge House, 1 Walnut Tree Close, Guildford GU1 4LZ  
Highways England Company Limited registered in England and Wales number 09346363